

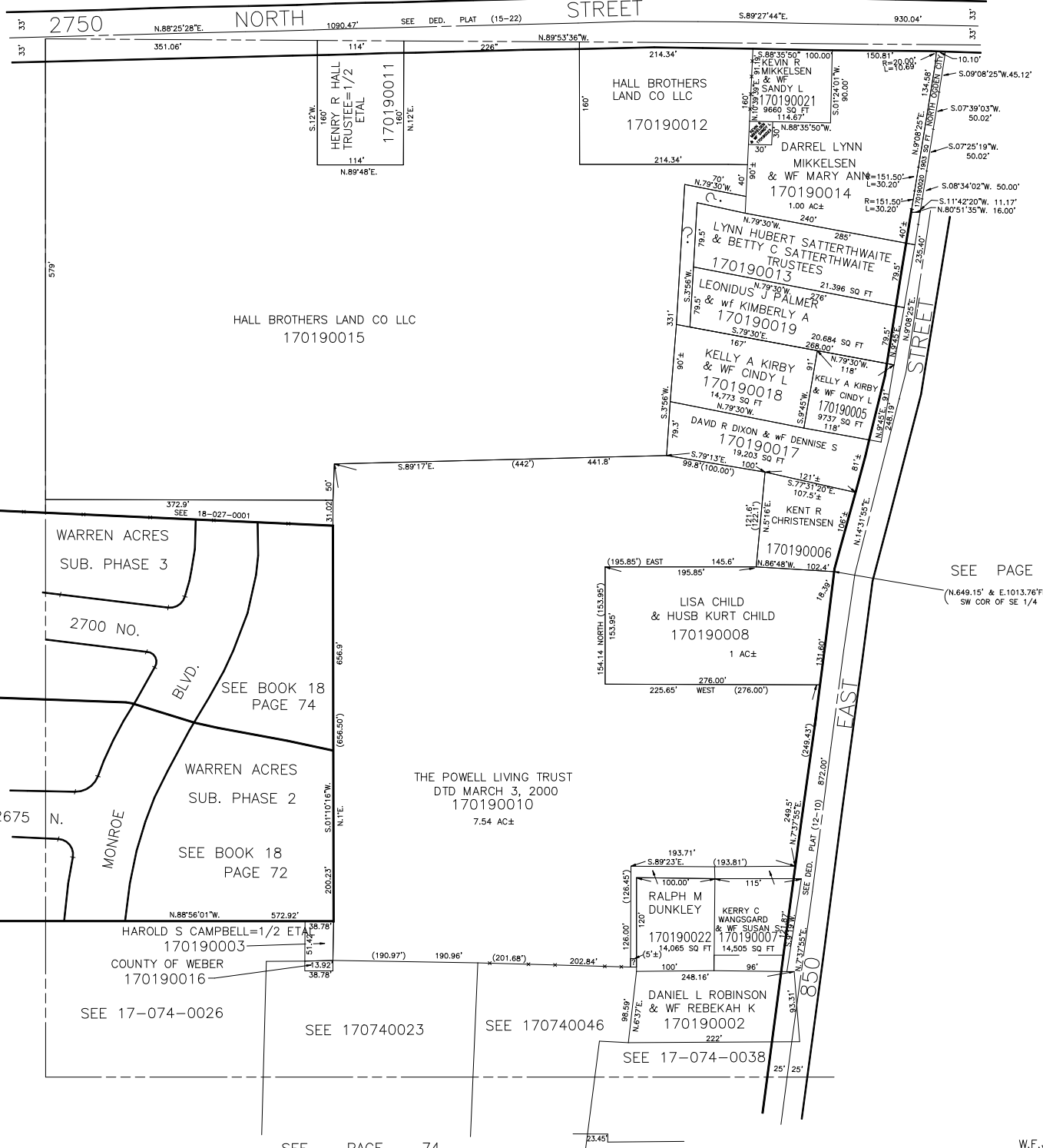
S.W. 1/4 OF S.E. 1/4  
SECTION 28, T.7N., R.1W., S.L.B. & M.

IN NORTH OGDEN CITY

TAXING UNIT: 10

SCALE 1" = 100'

SEE PAGE 11



SEE BOOK  
18  
PAGES  
13, 14

SEE PAGE 18  
(N.649.15' & E.1013.76'FR)  
SW COR OF SE 1/4

SEE PAGE 74